



Bringing it all together

BT Internet Radio

User Guide



Welcome...

to your BT Internet Radio

BT Internet Radio



Standby

- Listen to thousands of radio stations from around the world, with every type of music you can imagine.
- Stations checked and updated daily.
- Excellent sound quality.
- Portable around the home – listen to your music wherever you are.
- Listen to live streaming radio and on-demand content.
- Listen to music you have stored on your computer.
- Play your favourite stations from your PC / Mac music library.
- Alarm clock feature.
- Integrated full range stereo speakers.
- Wireless and easy to use.

This User Guide provides you with all the information you need to get the most from your BT Internet Radio.

You must first set up your radio before you can use it. This doesn't take long and is easy to do. Just follow the simple instructions in 'Getting Started', on the next few pages.

Need help?

If you have any problems setting up or using your BT Internet Radio, please contact the Helpline on 0870 242 1950.

Alternatively, you may find the answer in 'Help' at the back of this guide.

IMPORTANT

Don't forget that using an Internet Radio accounts towards your broadband usage limits.

Got everything?

- BT Internet Radio
- Mains power adaptor
- User Guide

This unit is not designed to work with batteries. Please do not try and remove the cover or insert batteries as this model does not support battery usage.

Before you can use the BT Internet Radio, you will need:

- Broadband Internet connection.
- A wireless router.
- If your wireless network is configured to use WEP or WPA data encryption then you need to know the code so you can get the Internet radio to communicate with the network.

In this guide

Getting started

Location	6
Setting up	6

Getting to know your Internet Radio

Controls	8
----------------	---

Using the Internet Radio

Switch the radio power On/Off	10
Putting the radio into standby mode	10
Choose a station to listen to	10
Adjusting the volume	11
Accessing the menu while a station is playing	12
Storing radio stations on the preset buttons	12
Playing a preset station	13
Stations that let you choose what you listen to	13
Setting the clock	15
Setting the alarm via the menu	15
Setting the alarm via the alarm button ..	15
Snooze function	17

Using the Media Player

Set up your Windows PC to allow the radio to access your audio files via Windows Shares	18
Locating shared audio files using the radio	19
Listening to a single shared track	20
Listening to a complete shared album ...	21
Adding tracks to the queue for playback later	21
Adding albums to the queue for playback later	21
Controlling playback	22
Browsing the list of tracks in the queue ...	22
Removing tracks from the queue	22
Playing tracks in a random order (shuffle)	23
Repeat play of tracks in the queue	24
Mode button	24
Set up a Windows PC to allow the radio to access your audio files via a UPnP server	25
Locating and playing media files using the radio and UPnP	26
Browsing the list of tracks queued up for playback	28
Adding UPnP tracks to the queue for playback later	28

Adding albums to the queue for playback later	29
Controlling playback	29
Removing tracks from the queue	29
Playing tracks in a random order (shuffle)	30
Repeat play of tracks in the queue	31
Mode button	31
Configure menu	32
Choosing options from the configure menu	32

Help	35
-------------------	----

General information

Safety information	37
Cleaning	37
Environmental	37
Software licence information	37
Product disposal instructions	37
Guarantee	38
Returning your radio	38
Technical information	39
Technical specifications	39
Declaration of Conformance	39

Getting started

IMPORTANT

Before you continue, make sure that your wireless router is powered up and connected to the Internet. To get this part of the system working you must refer to the instructions supplied with the router.

If you have a wireless laptop available you can check that the wireless network is up and working.

Press **Back** at any time to return to the previous screen.

If the radio cannot find any wireless networks, the display will show **No Wireless Networks Found**. If this happens, you will need to refer to the instructions supplied with your wireless access point to make sure it is working correctly.

The name for the access point may also be referred to as the ESSID.

IMPORTANT

Only connect to an access point you own or you have agreement to use.

Location

The Internet radio should work anywhere within 100 metres of the router, but this really depends on the access point being used.

Setting up

1. Connect the power

Plug the mains power cord into the socket on the back of the radio marked 7.5V DC and plug the other end into the mains power wall socket. The display on the front of the radio will come on and show **Reciva Radio ARM Powered**, then after a few seconds you will see **<Scan for networks>**.

2. Scan for a wireless network connection

When the display says **<Scan for networks>**, press **Select**.

The BT Internet Radio will now scan for all available wireless networks, whilst doing so the display will show **Scanning**.

When the radio finds your wireless network, it displays the name for the access point on the screen - this is a name that was allocated to the access point by the person who set up the network, for example **< My Home Network >**.

It is likely, that your radio will find more than one wireless access point. If this happens, you can choose which one you want to connect to. Turn the tuning dial on the radio to see the name for each access point the radio has found.

3. Connect to the wireless network

With the name for the access point you want to connect to displayed, press **Select**.

If your network is not configured to need an encryption code, the display should show **Connecting to network**, then **Network OK**.


If the screen displays either **Enter WEP key** or **Enter WPA key**, then the network is using one of the encryption systems: WEP or WPA and you will need to enter the correct code to enable the radio to communicate with your network.

After about 3 seconds, the display goes into the code entry mode. To enter the code, use the tuning dial to select each character of the code in turn, pressing **Select** after each character.

When you have entered the final character, use the tuning dial to select **END** and press **Select**.

The radio should now be able to connect to the network.

4. Connecting a headset (optional)

Connect the headset plug into the socket marked  on the side of the radio.

Your BT Internet Radio is ready for use.

The WEP or WPA code would have been set up by the person who set up and configured your wireless network.

WEP and WPA codes are sensitive to upper and lower case characters so you must enter them exactly.

Make sure the character you want is shown in the centre of the display before you press **Select**.

Getting to know your BT Internet Radio

Controls

1/Stop

In radio mode, press and hold down to store pre-set 1, pressing again will play pre-set 1.

In media player mode press to stop playback.

2/Prev Track

In radio mode, press and hold down to store pre-set 2, pressing again will play pre-set 2.

In media player mode press to skip back to the previous track.

3/Pause Play

In radio mode, press and hold down to store pre-set 3, pressing again will play pre-set 3.

In media player mode press to pause the track currently playing. Press to restart a paused or stopped track.

4/Next Track

In radio mode, press and hold down to store pre-set 4, pressing again will play pre-set 4.

In media player mode press to skip forward to the next track.

5/Browse

In radio mode, press and hold down to store pre-set 5, pressing again will play pre-set 5.

In media player mode press to browse through the list of tracks in the playback queue.

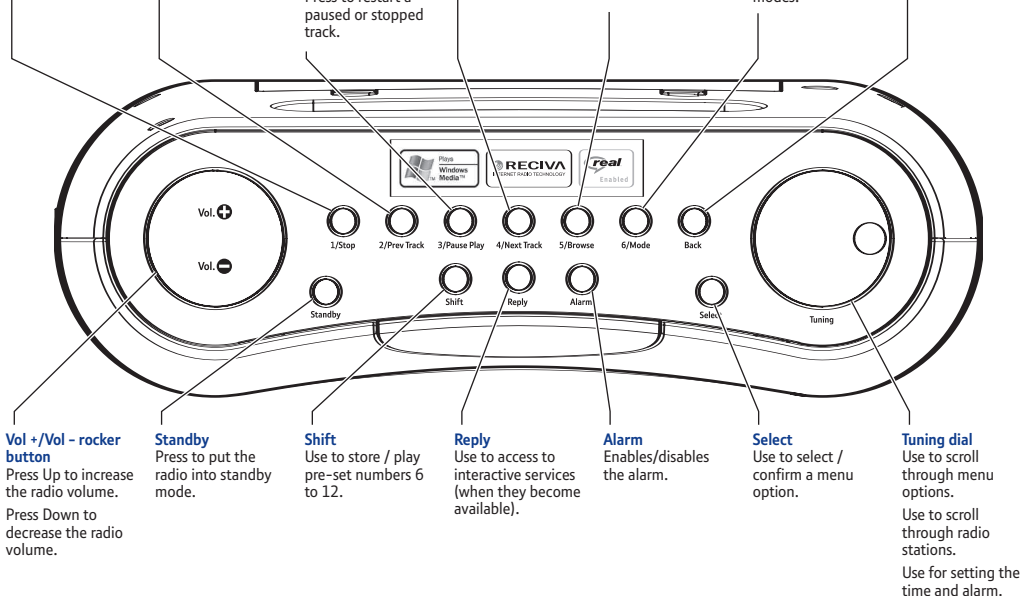
6/Mode

In radio mode, press and hold down to store pre-set 6. In radio mode, press to play pre-set 6.

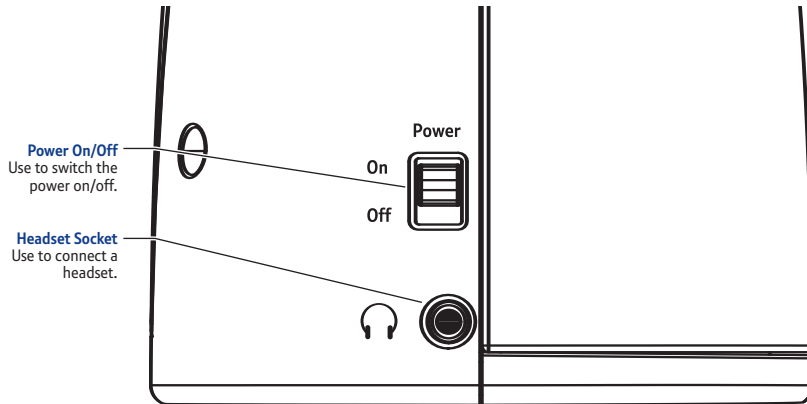
In media player mode, use to toggle shuffle and repeat modes.

Back

Press to return to the previous screen. Also to delete a track from the media queue when in 'browse' mode.



Controls



Using the Internet radio

To set the clock see page 15.

If you make a mistake, press **Back** to return to the previous display.

If < Stations > is not displayed, turn the tuning dial until it is.

Switch the radio power On/Off

1. Move the switch on the side of the radio to either the **On** or **Off** position.

Putting the radio into standby mode

If you are not using the radio for an extended period, you can conserve the radio power by putting it into standby mode. When in standby mode the clock will be shown on the display.

1. When the radio is on, press **Standby** and the clock will be displayed.

Or

When the radio is off, press **Standby**. The radio may take up to 60 seconds to start playing again, as it finds the radio station you were last connected to.

Choose a station to listen to

1. Press **Select** to return to the top-level menu. < Stations > is displayed.
2. Press **Select**, then turn the tuning dial to select either:
< Location > to choose from a list of radio stations from the country of your choice.

Or

< Genre > to choose stations by type, for example Classic Rock, Sport, News, etc.

3. Press **Select** to confirm.

If you selected <Location>:

Turn the tuning dial until the display shows the region you want (or select **All** to display all countries), then press **Select**.

Turn the tuning dial until the display shows the country you want, then press **Select**.

Turn the tuning dial until the display shows the station you want, then press **Select** and wait until the radio connects to that station.

If you selected <Genre>:

Turn the tuning dial until the display shows the type of music you want, then press **Select**.

Turn the tuning dial until the display shows the station you want, then press **Select** and wait until the radio connects to that station.

Adjusting the volume

Whilst a radio station is playing and is displayed on the radio's screen, you can change the volume simply by adjusting the volume dial.

Please note

Some radio stations do not broadcast 24 hours per day, and some stations are not always on-line.

If a station has on-demand content (that is, it gives you the option of listening to programmes which have already been broadcast), see "Stations that let you choose what you listen to".

Requesting a station that is currently unavailable

If you want to listen to a particular radio station which is currently not available online, you can visit BT's partner website the Reciva website at <http://www.reciva.com/> and put in a request to add the station to the list.

If a radio station is being played and you are in a menu, press **Back** repeatedly until the radio exits the menu and displays the current station and then turn adjust the volume dial.

Where # is the number of the pre-set button you held down.

Accessing the menu while a station is playing

When a radio station is playing, the station's name and bit rate are displayed.

To access the radio's menu: either press **Select** – which will take you directly to the 'Stations' menu, or press **Back** to return to the previous menu item.

Storing radio stations on the preset buttons

You can store up to 12 radio stations on the pre-set buttons which when pressed will automatically tune in and play the stored radio station.

With the radio station you want to store playing:

1. Simply press and hold for 4 seconds one of the preset buttons (**1** to **6**) until the display shows **Assigned to Preset #**.

Or, to assign a radio station to one of the presets numbered 7 to 12, press **Shift (and let go)**, then press and hold one of the preset buttons. To get out of shift mode, press back.

Playing a preset station

When a radio station is playing:

1. Press and release one of the preset buttons (1 to 6), for the station you want. To play a station assigned to one of the presets, 7 to 12, press **SHIFT** followed by the preset button.

Stations that let you choose what you listen to

Some radio stations provide you with a number of listening options; for example, some let you listen to programmes that have already been broadcast.

If you select a radio station with this facility, it will not start playing immediately, but instead the display will show **< Live >**.

1. Turn the tuning dial to scroll to **< Live >** or **< On Demand >**, then press **Select**.
2. If you choose **< Live >**, then the radio plays the 'live' current output from this station (as normal).

Or

If you choose **< On Demand >** then more screens are displayed so you can choose what you want to listen to.

What is displayed will depend on the station you choose – the following steps are only a guide.

WARNING

DO NOT hold down the pre-set button or the currently playing station will overwrite the stored station.

When you choose **< On Demand >**, the display shows the names of the programmes.

Turn the tuning dial to choose the program you want and press **Select**.

The selected programme will either start playing, or the display may show a list of days for you to choose from.

Using the tuning dial, pick the day the programme was broadcast, then press **Select**.

You may also be given the option to choose a Start Time. Set the Start Time using the tuning dial and press **Select**.

Programmes that let you to choose a start time also enable you to fast-forward and rewind to the part of the programme you want while the radio is playing. When you press **Prev Track** or **Next Track**, the elapsed time that the programme has been playing is displayed. You can now turn the tuning dial to change this time.

You can also use **Prev Track** or **Next Track** to adjust the time. When you press **Select** again, the programme will play from that point.

Setting the clock

1. Press **Select**.
2. Turn the tuning dial until the display shows < **Configure** > and press **Select**.
3. Turn the tuning dial until the display shows < **Clock** > and press **Select**.
4. Turn the tuning dial until the display shows < **Set Time** > and press **Select**.
5. The current time setting is shown with a cursor flashing under the hour. Turn the tuning dial to set the correct hour and press **Select**.
6. A cursor flashes under the minutes, turn the tuning dial to set the correct minutes and press **Select**.

The display shows **Time Set** with the new time shown beneath for 3 seconds, then returns to the radio station display.

If you make a mistake, press **Back** to return to the previous display.

Setting the alarm via the menu

1. Press **Select**.
2. Turn the tuning dial until the display shows < **Configure** > and press **Select**.
3. Turn the tuning dial until the display shows < **Clock** > and press **Select**.

4. Turn the tuning dial until the display shows < Set Alarm > and press **Select**.

5. Turn the tuning dial to select either **Yes** or **No** and press **Select**.

If you choose **No**, then the alarm is turned off. The display shows **Alarm is Off** for 3 seconds, then returns to the radio station display.

If you choose **Yes** then you will need to set the time for the alarm.

The current alarm time is displayed with a flashing cursor under the hour.

Turn the tuning dial to select the hour for the alarm to sound and press **Select**.

A cursor flashes under the minutes, turn the tuning dial to select the minute for the alarm to sound and press **Select**.

6. The display shows **Alarm Set** with the alarm time shown beneath for 3 seconds and then returns to the radio station display.

Setting the alarm via alarm button

1. Press **Alarm**. **Set Alarm** and the current alarm setting are displayed.
2. Turn the tuning dial to select the hour for the alarm to sound and press **Select**.
3. Turn the tuning dial to select the minute for the alarm to sound and press **Select**.

Snooze function

When the radio is in standby mode and the alarm sounds, you can use the alarm button to put the radio into 'snooze mode'.

1. When the alarm sounds, press **Alarm**. The alarm will stop and the radio will go into snooze mode for 5 minutes. After 5 minutes, the alarm will sound again.

To remain in 'snooze mode' you can keep pressing the **Alarm** button and the alarm will resound at 5 minute intervals.

2. To switch the alarm off completely, press **Standby**.

Using the Media Player

To be able to play music files that you have stored on your PC via the media player, please ensure that:

The music files are one of the allowed type of audio (see list opposite).

Music files are not 'protected'.

Music files are stored in the correct location on your PC and 'File Sharing' is switched on.

Music files can be shared on the network.

For more information or help with any of the above, please refer to your PC/Windows XP instruction manual or 'Help' section.

The Media Player allows you to play the following types of audio files: AAC, AU, MP3, RM, WAV, WMA and playlists (M3U) stored on a networked PC. It has been verified to work on Windows 2000 and Windows XP.

Set up your Windows PC to allow the radio to access your audio files via Windows Shares

There are 2 ways of sharing audio files on your computer to be able to play them on your BT Internet radio. The first and simplest way, is using the 'Windows Shares' application on Windows XP or Windows 2000. This method of file sharing is best suited to compressed music files, for example .MP3 or .WMA.

This method of file sharing is not recommended if your music files are stored as large, uncompressed files, for example .WAV files. If this is how your music is stored, we recommend you follow the second method of file sharing and refer to the section 'Set up a Windows PC to allow the radio to access your audio files via a UPnP server'.

Ensure your PC is connected to the same access point/subnet as your Radio. Then make a note of your PC network name by right clicking on 'My Computer', clicking on 'Properties' going into 'Computer Name' (for Windows XP).

1. Using Windows Explorer, locate the folder where your audio files are stored.
2. Right click on the folder.
3. Select 'Properties'.
4. When the 'Properties' window opens, click on the 'Sharing' tab.
5. Select 'Share this folder on the network' and 'Allow network users to change my files'.

Locating shared audio files using the radio

1. Switch on the radio.
2. Wait for **Stations** to be displayed on the radio (or press **Back repeatedly** until **Stations** is displayed).
3. Turn the tuning dial until **Media Player** is displayed and press **Select**.
4. Turn the tuning dial until **Windows Shares** is displayed and press **Select**.
5. Turn the tuning dial until **Scan for PCs** is displayed and press **Select**.

If you use smaller, compressed audio files, such as .MP3 or .WMA files, you can store much more music on your PC as the files take up much less memory space.

Do not make your 'My Documents' or any of its sub-folders (e.g. 'My Music') shareable.

If you have a large number of audio files this scan could take several minutes to complete.

The first time the file scan is done a file called '.reciva_media_cache' is written to the folder where the audio files are stored. This is in order to speed up subsequent file scans.

6. **Findings PCs** is displayed. Once the radio has finished, turn the tuning dial to highlight the correct PC and press **Select**.

If the PC uses logon authentication you will be asked for a username and password. You will have to check your PC to find these out, but your normal login credentials will be acceptable. If you want to add a username and password for the radio that would be preferable. Then the radio will search for shared folders on that PC.

7. Turn the tuning dial to highlight the correct shared folder and press **Select**.
8. **File Scan...** is displayed as the radio scans through the media files in the shared folder. Text on the bottom row of the display will change to indicate that the file scan is in progress.
9. Once the radio has finished scanning, **By Album** will be displayed. You can now browse through the scanned media files, which will now be organised 'By Album', 'By Artist' and 'Playlists' (if available).

Listening to a single shared track

1. Turn the tuning dial until **By Artist** is displayed and press **Select**.
2. Turn the tuning dial until the artist you want is displayed and press **Select**.
3. Turn the tuning dial until the album name you want is displayed and press **Select**.

4. [Add to Queue] is displayed. Turn the tuning dial until the track you want is displayed and press **Select**. The track will begin playing.

Listening to a complete shared album

1. Turn the tuning dial until **By Artist** is displayed and press **Select**.
2. Turn the tuning dial until the artist you want is displayed and press **Select**.
3. Turn the tuning dial until the album name you want is displayed and press **Select**.
4. [Add to Queue] is displayed, press **Select** and the album will begin playing.

Adding tracks to the queue for playback later

1. Highlight the required track and press **Select**. **Track Added To Queue** will be displayed.

Adding albums to the queue for playback later

1. Highlight the required album and press **Select**.
2. Turn the tuning dial until [Add To Queue] is displayed and press **Select**. **Tracks Added To Queue** will be displayed.

Before you can select 'By Artist', you will need to have carried out steps 1 to 7 of the section 'Locating shared audio files using the radio' and located the folder containing the item you want to select.

Media files scanned from the radio's 'Windows Shares' function can also be added to the radio's queue.

Controlling playback

- Press **1/Stop** to stop playback.
- Press **3/Pause Play** to either pause a currently playing track or to restart a currently paused track/stopped track.
- Press **2/Prev Track** to start playback of the previous track in the queue.
- Press **4/Next Track** to start playback of the next track in the queue.

Browsing the list of tracks in the queue

1. Press **5/Browse**. The name of the currently playing track will be displayed.
2. Turn the tuning dial to see which tracks are queued up for playback.

To jump to a particular place in the queue, press **Select** when the required track is displayed.

Removing tracks from the queue

1. Press **5/Browse**. The name of the currently playing track will be displayed.
2. Turn the tuning dial the track to select the track you want to remove from the queue.

3. Press and hold **1/Stop** for 2 seconds until **Delete Track?** is displayed.
4. Turn the tuning dial to highlight either:
Yes to confirm, then press **Select**. **Removed From Queue** will be displayed or **No** to cancel.

To remove all tracks from the queue, keep pressing **Back** until the 'Media Player' menu item is selected, press **Select** and then turn the tuning dial to display **Clear Queue** and press **Select**.

Playing tracks in a random order (shuffle)

1. Select the individual tracks (as described on page 20) and place them in the queue (see page 21).
2. Use the **Select** and **Back** buttons to scroll through the menu and display **Media Player**, then press **Select**.
3. Turn the tuning dial until **Playback Mode** is displayed and press **Select**.
4. Turn the tuning dial until **Shuffle** is displayed and press **Select**.
5. Turn the tuning dial to select either **YES** to enable shuffle mode or **NO** disable shuffle mode.

To play tracks in a random order, you will need to select YES to enable the 'shuffle mode'.

To play tracks in the queue repeatedly, you will need to select YES to enable the 'repeat mode'.

You must press the **Mode** button within 2 seconds to change the mode setting. If you do not press within 2 seconds, the display will show the previous setting.

Repeat play of tracks in the queue

1. Select the individual tracks (as described on page 20) and place them in the queue (see page 21).
2. Use the **Select** and **Back** buttons to scroll through the menu and display **Media Player**, then press **Select**.
3. Turn the tuning dial until **Playback Mode** is displayed and press **Select**.
4. Turn the tuning dial until **Repeat** is displayed and press **Select**.
5. Turn the tuning dial to select either **YES** to enable repeat mode or **NO** to disable repeat mode.

Mode button

The mode button is used to toggle between shuffle and repeat modes, setting them to On or Off.

Press **Mode** once, for Shuffle (OFF) and Repeat (OFF).

Press **Mode** twice, for Shuffle (ON) and Repeat (OFF).

Press **Mode** three times, for Shuffle (OFF) and Repeat (ON).

Press **Mode** four times, for Shuffle (ON) and Repeat (ON).

Set up a Windows PC to allow the radio to access your audio files via a UPnP server

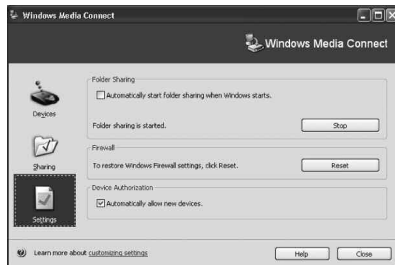
If your music is stored as large, uncompressed files, for example .WAV, we recommend you follow this method of file sharing.

If your PC is running 'Microsoft Windows XP', then you can use 'Windows Media Connect' to act as your UPnP (Universal Plug and Play) MediaServer 1.0 compliant server. You can download 'Windows Media Connect' from Microsoft's website and install it by following the instructions detailed in its installation wizard.

If your music is stored as smaller, compressed files, for example .MP3 or .WMA we recommend you follow the 'Window Shares' method of file sharing outlined in the section 'Set up your Windows PC to allow the radio to access your audio files via Windows Shares'.

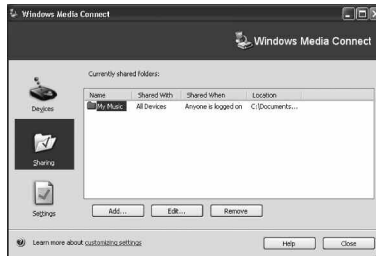
1. You will first need to configure Windows Media Connect to allow certain devices to connect to it. To do this, select 'Settings' from Windows Media Connect and tick the box 'Automatically allow new devices', as shown below.

Settings for Windows Media Connect



2. Secondly, you will need to select which folders on your PC you want Windows Media Connect to share with your Internet radio. To do this, select 'Sharing' then press the 'Add' button to add your folders (as shown below in 'Sharing Files With Windows Media Connect').

Sharing Files With Windows Media Connect:



3. To enhance security with Windows Media Connect, you can disable the 'Automatically allow new devices' option and only allow certain devices to connect. You can select which devices you want to connect from the 'Devices' section by clicking on 'Deny' or 'Allow'.

Locating and playing media files using the radio and UPnP

Once the UPnP server is configured to share media files with the Internet radio, you can play the files by following these instructions on the radio:

1. Keep pressing **Back** to get to the radio's top-level menu and then turn the tuning dial to select **Media Player** and press **Select**.
2. Turn the tuning dial to display **UPnP Servers** and press **Select**. The radio will scan for all available UPnP servers.
3. After a successful scan, select your UPnP server by turn the tuning dial to highlight the one you want (if there is more than one), then press **Select**.
4. At this stage, your radio should be listed in 'Windows Media Connect' and can be viewed from the 'Devices' window; your radio will be displayed with its MAC address. To verify that the MAC address listed is your radio, select **Configure** on your radio's menu and then turn the tuning dial until **Network Config** is displayed and press **Select**. You can now control the access for this device on your PC using Windows media connect by looking in the 'Devices' section and clicking on 'Deny' or 'Allow'.
5. Turn the tuning dial until **View Config** is displayed and press **Select**.
6. Turn the tuning dial until **MAC Address** is displayed to view your radio's MAC address.
7. The radio will now list the media categories available from the UPnP server, e.g. Music, Playlists etc. Turn the tuning dial to select which category you wish to browse (for example **Music**) and press **Select**.

It may take a few seconds for the radio to complete the scan. Before the scan has completed, the radio will display **[Empty]**. The radio will continue to display **[Empty]** if no UPnP servers are found.

Media files scanned from the radio's 'Windows Shares' function can also be added to the radio's queue.

8. Turn the tuning dial to select a sub category (for example **Album**) and press **Select**.
9. Turn the tuning dial to highlight the media files that you wish to play and press **Select**.
10. **[Add to Queue]** is displayed, press **Select**. The tracks will be added to the queue and begin playing automatically.

Browsing the list of tracks queued up for playback

1. Press **5/Browse**. The name of the currently playing track will be displayed.
2. Turn the tuning dial to see which tracks are queued up for playback.

To jump to a particular place in the queue, press **Select** when the required track is displayed.

Adding UPnP tracks to the queue for playback later

1. Highlight the required track and press **Select**. **Track Added To Queue** will be displayed.

Adding albums to the queue for playback later

1. Highlight the required album and press **Select**.
2. Turn the tuning dial until [Add To Queue] is displayed and press **Select**. **Tracks Added To Queue** will be displayed.

Controlling playback

- Press **1/Stop** to stop playback.
- Press **3/Pause Play** to either pause a currently playing track or to restart a currently paused track/stopped track.
- Press **2/Prev Track** to start playback of the previous track in the queue.
- Press **4/Next Track** to start playback of the next track in the queue.

Removing tracks from the queue

1. Press **5/Browse**. The name of the currently playing track will be displayed.
2. Turn the tuning dial the track to select the track you want to remove from the queue.
3. Press and hold **1/Stop** for 2 seconds until **Delete Track?** is displayed.

To play tracks in a random order, you will need to select YES to enable the 'shuffle mode'.

4. Turn the tuning dial to highlight either:

Yes to confirm, then press **Select**. **Removed From Queue** will be displayed.

Or

No to cancel.

To remove all tracks from the queue, keep pressing **Back** until the 'Media Player' menu item is selected, press **Select** and then turn the tuning dial to display **Clear Queue** and press **Select**.

Playing tracks in a random order (shuffle)

1. Select the individual tracks (as described on page 26) and place them in the queue (see page 28).
2. Use the **Select** and **Back** buttons to scroll through the menu and display **Media Player**, then press **Select**.
3. Turn the tuning dial until **Playback Mode** is displayed and press **Select**.
4. Turn the tuning dial until **Shuffle** is displayed and press **Select**.
5. Turn the tuning dial to select either **YES** to enable shuffle mode or **NO** to disable shuffle mode.

Repeat play of tracks in the queue

1. Select the individual tracks (as described on page 26) and place them in the queue (see page 28).
2. Use the **Select** and **Back** buttons to scroll through the menu and display **Media Player**, then press **Select**.
3. Turn the tuning dial until **Playback Mode** is displayed and press **Select**.
4. Turn the tuning dial until **Repeat** is displayed and press **Select**.
5. Turn the tuning dial to select either **YES** to enable repeat mode or **NO** to disable repeat mode.

Mode button

The mode button is used to toggle between shuffle and repeat modes, setting them to On or Off.

Press **Mode** once, for Shuffle (OFF) and Repeat (OFF).

Press **Mode** twice, for Shuffle (ON) and Repeat (OFF).

Press **Mode** three times, for Shuffle (OFF) and Repeat (ON).

Press **Mode** four times, for Shuffle (ON) and Repeat (ON).

To play tracks in the queue repeatedly, you will need to select YES to enable the 'repeat mode'.

You must press the **Mode** button within 2 seconds to change the mode setting. If you do not press within 2 seconds, the display will show the previous setting.

If you make a mistake at any point, press **Back** to return to the previous screen.

For help with connecting your radio to wireless networks, see the 'Setting up' section on page 6.

Configure menu

Choosing options from the Configure menu

1. Press **Select**.
2. Turn the tuning dial until **Configure** is displayed and press **Select**.
3. Turn the tuning dial until the display shows the option you want and press **Select**.

The options are explained below:

<Network Config>

Enables you to scan again and connect to another wireless network, or to manually configure the network parameters. You may want to select this option if you are moving around from place to place with the Internet radio.

This option also allows you to choose whether or not the Internet radio displays a warning message when the network signal strength is low. To enable this warning feature, select **Signal Warning** and then select **Yes**.

<Version>

Choose this option to display the versions numbers of the various parts of software and hardware on your Internet radio.

<Upgrade Firmware>

Choose this option to download new firmware to your radio.

<Language>

Choose this option to change the display language.

<Factory Reset>

Choose this option if you want to reset the radio to it's default settings.

<Register>

If you select this option, the display will show a key that can be used to register the radio on the Reciva Customer portal: <http://www.reciva.com/>

<Clock>

Choose this option to set the time, to set an alarm or to view the current alarm setting.

<Sleep Timer>

Select the 'Sleep timer' option to enable the Internet radio to switch itself off after a set period.

Select **Sleep Timer**, the display shows **Sleep Timeout**.

Turn the tuning dial to set the time you want the radio to switch off (in hours:minutes:seconds) and then press **Select**.

Press **Back** to cancel the radio beginning a firmware upgrade.

A Firmware upgrade may take several minutes. DO NOT switch off the radio power until the upgrade is complete, otherwise the radio may become permanently damaged. Also, after a firmware upgrade, the radio may be required to reconnect to your network – so have your encryption key handy.

If you perform a factory reset on your radio you will lose all your presets and your wireless network connection.

See "Setting the clock" and/or "Setting the alarm" on page 15 for more information.

To switch the radio back on again, press **ON / OFF**.

The radio will continue to play as normal until the sleep time is reached, when it will go into standby mode.

<Backlight>

Choose this option to change the display backlight setting:

The options are:

Active – where there is user activity.

Inactive – where there is no user activity for 30 seconds or more.

Standby - when the radio is switched off.

Select **Backlight**, turn the tuning dial to select the option you want and press **Select**.

The display shows the current backlight setting for this menu mode. To alter this setting, turn the tuning dial to increase or decrease it.

If you experience any problems when using your BT Internet Radio, first refer to the Help section below, if your question still remains unanswered you can look in the 'Help' section of the following website: <http://www.reciva.com>

I cannot connect the radio to the wireless network

- Make sure that your connected PC can access the Internet (i.e. can browse the web) using the same network.
- Check that a DHCP server is available, or that you have configured a static IP address on the radio.
- Check that your firewall is not blocking any outgoing ports. As a minimum the radio needs access to UDP and TCP ports 80, 554, 1755, 5000 and 7070.
- Check your access point does not restrict connections to particular MAC addresses. You can view the radio's MAC address using the menu item Configure -> Network Config -> View Config -> MAC address. If the MAC address is not listed, you will need to add it. Refer to the manufacturer's guide for your access point for instructions on how to add your BT Internet Radio to the list of allowed equipment.
- If you have an encrypted network, check that you have entered the correct key or pass phrase into the radio. Remember that text-format keys are case sensitive.

I can connect to the network successfully, but am unable to play particular stations.

- Not all stations broadcast 24 hours a day. The station may not be broadcasting at this time of the day (remember it may be located in a different time zone).
- The station may have reached the maximum allowed number of simultaneous listeners.
- The station may have stopped broadcasting.
- The link on the radio may be out of date.

- The Internet connection between the server (often located in a different country) and you is slow. Try using a PC to play back the stream via the broadcaster's web site. If you can play back the station with a PC, use the form at http://www.reciva.com/stations/add_station.asp to notify us so that we can change the station data that is used by the radio.

I cannot seem to share audio files for playback on the BT Internet radio.

- Check that the music files you want to share are one of the allowed type of audio: AAC, AIFF, MP3, RM, WAV, WMA and playlists (M3U) stored on a networked PC.
- Check that the music files are not 'protected'. (Refer to your PC/Windows XP instruction manual or 'Help' section.)
- Check that the music files are stored in the correct location on your PC and 'File Sharing' is switched on. (Refer to your PC/Windows XP instruction manual or 'Help' section.)
- Check that the music files can be shared on the network.
- If you are trying to share large, uncompressed files, for example. WAV files you must make sure you follow the section 'Set up your Windows PC to allow the radio to access your audio files via a UPnP server', on page 25.

If you are having trouble connecting to your Windows XP shared music folder, and you are using a username with no password, try adding a new username with a password to Windows (Control Panel – User Accounts) specifically for the radio, and try to connect using that.

Customer Helpline

If you are still experiencing difficulties please call the BT Internet Radio Helpline on 0870 242 1950

Safety information

- Only use the power supply that came with your BT Internet Radio. Using an unauthorised power supply will invalidate your guarantee and may damage the radio. The item code for the mains power supply is either 028983 or 032854.
- Do not open the radio. This could expose you to high voltages or other risks. Contact the Helpline on 0870 242 1950 for all repairs.
- Your product may interfere with other electrical equipment, e.g. telephones, TV and radio sets, clock/alarms and computers if placed too close. It is recommended that you place your product at least one metre away from such appliances to minimise any risk of interference.

Cleaning

- Clean the radio with a damp (not wet) cloth, or an anti-static wipe.

Environmental

- Do not expose to direct sunlight.
- Do not stand your product on carpets or other surfaces which generate fibres, or place it in locations preventing the free flow of air over its surfaces.
- Do not submerge any part of your product in water and do not use it in damp or humid conditions, such as bathrooms.
- Do not expose your product to fire, explosive or other hazardous conditions.

Software licence information

- This product contains software licensed under version 2 of the GNU Public License and version 2.1 of the GNU Lesser Public License. The source code for this software is available from:
<http://www.reciva.com/gpl/>
- This product includes technology owned by Microsoft Corporation and under a licence from Microsoft Licensing GP. Use or distribution of such technology outside of this product is prohibited without a license from Microsoft Corporation and/or Microsoft Licensing, GP as applicable.



Product disposal instructions

- The symbol shown here and on the product means that the product is classed as Electrical or Electronic Equipment and should not be disposed with other household or commercial waste at the end of its working life.
- The Waste of Electrical and Electronic Equipment (WEEE) Directive (2002/96/EC) has been put in place to recycle products using best available recovery and recycling techniques to minimise the impact on the environment, treat any hazardous substances and avoid the increasing landfill.

Product disposal instructions for residential users

- When you have no further use for it, dispose of the product as per your local authority's recycling processes. For more information please contact your local authority or the retailer where the product was purchased.

Product disposal instructions for business users

- Business users should contact their suppliers and check the terms and conditions of the purchase contract and ensure that this product is not mixed with other commercial waste for disposal.

Guarantee

- Your BT Internet Radio is guaranteed for a period of 12 months from the date of purchase.
- Subject to the terms listed below, the guarantee will provide for the repair of, or at BT's or its agent's discretion, the option to replace the BT Internet Radio or any component thereof, which is identified as faulty or below standard, or as a result of inferior workmanship or materials. Products over 28 days old from the date of purchase may be replaced with a refurbished or repaired product.

The conditions of this guarantee are:

- The guarantee shall only apply to defects that occur within the 12 month guarantee period.
- Proof of purchase is provided.
- The equipment is returned to BT or its agent as instructed.
- This guarantee does not cover any faults or defects caused by accidents, misuse, fair wear and tear, neglect, tampering with the equipment, or any attempt at adjustment or repair other than through approved agents.
- This guarantee does not affect your statutory rights.

Within the 12 month guarantee period:

- Prior to returning your product, please read the Help section beginning on page 35 or contact the Helpline on 0870 242 1950 for assistance. In the unlikely event of a defect occurring, please follow the Helpline's instructions for replacement or repair.

Outside of the 12 month guarantee period:

- If your product needs repair after the guarantee period has ended, the repair must meet the approval requirements for connection to the radio network.

Returning your radio

- If the Helpline is unable to remedy your problem they will ask you to return the product. Where possible, pack the product in its original packaging. Please remember to include all parts, including the power supply unit. (Please note that we cannot take responsibility for goods damaged in transit.) Please obtain and keep proof of posting from the Post Office.

Technical information

Technical specifications

- Power supply: External PSU 230 VAC input. 7V5DC, 1000 mA output.
- Speakers: Full range stereo. Internal 3.6 inch, 6 ohm, 1.5 watt
- Headphone connector: Auxiliary 3.5mm Stereo output socket
(Headphones or HiFi connection) 32 Ohms
- Network module: USB wireless

For your records

Date of purchase:

.....

Place of purchase:

.....

Serial number:

.....

For guarantee purposes proof of purchase is required so please keep your receipt.



This equipment contains a radio transmitter. In France, to avoid interference with other radio services, it is not permitted to use this equipment outdoors.

Declaration of Conformance

This can be found at:
www.ateamtech.com/products/doc/btinternetradio

Offices worldwide

The services described in this publication are subject to availability and may be modified from time to time. Services and equipment are provided subject to British Telecommunications plc's respective standard conditions of contract. Nothing in this publication forms any part of any contract.

© British Telecommunications plc 2006.
Registered Office: 81 Newgate Street, London EC1A 7AJ.
Registered in England No. 1800000.

Designed and produced by The Art & Design Partnership Ltd.
Printed in China

BT Internet Radio (09/06) 4

