



# User's manual

Internet Radio

English

Before using this product, please read the security instructions first and bear them in mind when using the product.

# Safety Instructions

Please read the safety instructions below before using your Internet Radio.

- Only use the AC adaptor that provided with your Internet Radio. Using an unauthorized power supply will invalidate your guarantee and may damage the radio.

## Warning

- Do not overload the electrical outlet with too many devices at any time.  
(This may cause overheating and/or fire.)
- Do not bend the power cord excessively or place any heavy objects on it. (This may cause fire.)
- Do not handle the power plug with wet hands. (This may cause electric shock.)

## Caution

- Your product may interfere with other electrical equipment, e.g. telephones, TV and radio sets, clock/alarms and computers if placed too close. It is recommended that you place your product at least one meter away from such appliances to minimize any risk of interference.
- Never disassemble or modify this Internet Radio in any way.
- Do not let chemicals, such as benzene, thinners etc., come in contact with this Internet Radio.
- Avoid using this Internet Radio in locations with high temperatures (40°... or higher) or low temperatures (5°... or lower), or with excessive moisture.
- Do not drop this Internet Radio or give it a shock.
- Keep this Internet Radio away from locations where it may be exposed to severe vibrations or magnetic materials.
- Avoid exposing this Internet Radio to direct sunlight or heat-generating devices.
- Avoid exposing this Internet Radio to dirt or soot.
- Never allow liquids, spray or other materials to come into contact with the inside of this Internet Radio.
- Unplug this Internet Radio from the wall outlet before cleaning it. Use only a soft cloth to clean the exterior of this Internet Radio.



### Disposal of Old Electrical & Electronic Equipment (Applicable in the European Union and other European countries with separate collection systems)

This symbol on the product or on its packaging indicates that this product shall not be treated as household waste. Instead it shall be handed over to the applicable collection point for the recycling of electrical and electronic equipment. By ensuring this product is disposed of correctly, you will help prevent potential negative consequences for the environment and human health, which could otherwise be caused by inappropriate waste handling of this product. The recycling of materials will help to conserve natural resources. For more detailed information about recycling of this product, please contact your local city office, your household waste disposal service or the shop where you purchased the product.

# FCC Information

The Federal Communications Commission Radio Frequency Interference Statement includes the following warning:

NOTE: This equipment has been tested and found to comply with the limits for a Class B digital device, pursuant to Part 15 of the FCC Rules. These limits are designed to provide reasonable protection against harmful interference in a residential installation.

This equipment generates, uses, and can radiate radio frequency energy and, if not installed and used in accordance with the instructions, may cause harmful interference to radio communications.

However, there is no guarantee that interference will not occur in a particular installation.

If this equipment does cause harmful interference to radio or television reception, which can be determined by turning the equipment off and on, the user is encouraged to try to correct the interference by one or more of the following measures:

- Reorient or relocate the receiving antenna.
- Increase the separation between the equipment and receiver.
- Connect the equipment into an outlet on a circuit different from that to which the receiver is connected.
- Consult the dealer or an experienced radio/TV technician for help.

This device complies with part 15 of the FCC Rules.

Operation is subject to the following two conditions: (1) This device may not cause harmful interference, and (2) this device must accept any interference received, including interference that may cause undesired operation.

**Caution :** Any changes or modifications in construction of this device which are not expressly approved by the party responsible for compliance could void the user's authority to operate the equipment.

## **IMPORTANT NOTE:**

### **FCC Radiation Exposure Statement**

This equipment complies with FCC radiation exposure limits set forth in an uncontrolled environment.

This equipment should be installed and operated with minimum distance 20cm between the radiator and your body. This transmitter must not be co-located or operating in conjunction with any other antenna or transmitter.

### **Canadian Department of Communications Radio Interference Regulations**

This digital apparatus (Wireless Internet Radio) does not exceed the Class B limits for radio-noise emissions from digital apparatus as set out in the Radio Interference Regulations of the Canadian Department of Communications.

# Table of contents



<b>Safety instructions</b> .....	1	<b>Auxiliary Function</b> .....	18
<b>FCC Information</b> .....	2	<b>Alarm clock</b>	
<b>Features</b> .....	4	Setting the Alarms .....	19
<b>Part Descriptions</b>		Setting the sleep timer .....	19
Internet Radio .....	5	<b>Configure menu</b> .....	20
Display window icons .....	7	<b>Configure ‘My Stuff’</b>	
<b>Getting started</b>		Registering an account on Reciva’s website .....	23
What you need before you can use		Configuring ‘My Stations’ .....	23
your Internet radio .....	8	Configuring ‘My Streams’ .....	23
Steps for connecting your radio to		Configuring ‘My Podcasts’ .....	23
your wireless network .....	8	<b>Product Specifications</b> .....	24
Using the wired LAN function (optional) .....	9	<b>Troubleshooting</b> .....	25
<b>Using the Internet Radio</b>		<b>Software license information</b> .....	26
Choosing a radio station to listen to .....	10		
Storing a radio station in a preset .....	10		
Stations which enable you to choose			
what you listen to .....	11		
<b>Using Podcasts</b>			
Choosing podcasts to listen to .....	12		
<b>Using the Media Player</b>			
Windows shares .....	13		
UPnP servers .....	14		
Local Media (External USB Host) .....	17		

# Features

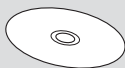
This internet radio is a device with which you can play music files that are stored on your computer, or listen to web radio or podcasts, via a wireless LAN. You can also listen to music files stored on USB thumb drive via USB HOST. You can enjoy music with high quality speakers.

## What this product can do

- Listen to thousands of radio stations from around the world,
- Stations checked and updated daily.
- Listen to live streaming radio and on-demand content.
- Listen to music files you have stored on your computer. (PC Streaming Function)
- Listen to an audio device (Auxiliary Function)
- Listen to music files you have stored on USB thumb drive.
- Listen to podcasts.
- Alarm clock feature.
- Sleep Timer
- Integrated high quality stereo speakers.
- Wireless and easy to use.
- Line Out Function
- Support the Wired LAN.(optional)

## Accessories

- The components may differ slightly in appearance with the provided images.



User's manual CD



Quick Guide



AC Adaptor



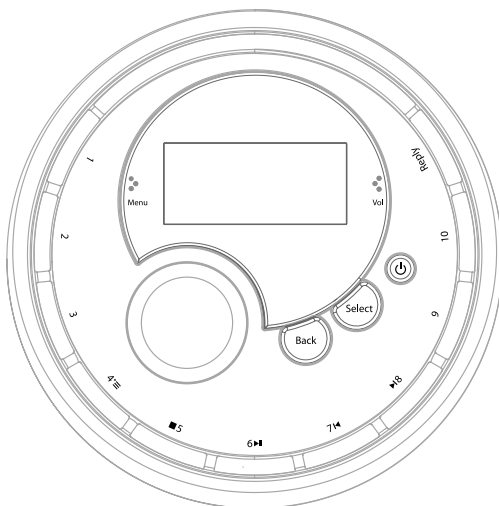
AUX IN Audio Cable  
(optional)



USB to Ethernet  
(optional)

# Part Description

## • Internet Radio



### 1-3

In radio mode, press and hold down to store preset #, pressing again will play preset# (# : 1-3)

### 4 (Browse)

In radio mode, press and hold down to store preset 4, pressing again will play preset4.

In media player mode, press to browse through the list of tracks in the playback queue.

### 5 (Stop)

In radio mode, press and hold down to store preset 5, pressing again will play preset 5.

In media player Mode, press to stop playback. Also to delete a track from the media queue when in 'browse' mode.

### 6 (Play/Pause)

In radio mode, press and hold down to store preset 6, pressing again will play preset 6.

In media player mode, press to pause the track currently playing. Press to restart a paused or stopped track.

### 7 (Previous Track)

In radio mode, press and hold down to store preset 7, pressing again will play preset 7.

In media player mode, press to skip back to the previous track.

### 8 (Next Track)

In radio mode, press and hold down to store preset 8, pressing again will play preset 8.

In media player mode, press to skip forward to the next track.

### 9-10

In radio mode, press and hold down to store preset #, pressing again will play preset# (# : 9-10)

### Reply

Use to access to interactive services (when they become available).

### Back

Cancels or stops the action and returns to the previous menu.

### Select

Use to select / confirm a menu option.

### POWER( )

Turns the power on/off.

### LCD screen

A station name or music tile, settings and messages appear on this display window.

### Knob

Use to adjust the volume when playing music files or listening this radio.

Use to navigate menu options or radio stations.

Use for setting the time and alarm.

# Part Description



English



**Built-in stereo speaker**



## **DC Power Jack**

Connect the AC Adaptor (DC 7.5V, 1.6A) to the DC Jack.

## **AUX IN jack**

Use to connect a external audio device to AUX IN jack using 'Audio Cable'.

## **Headphone Socket**

Use to connect a headphone.

## **USB HOST jack**

Use to connect the external USB compatible devices with UMS support(USB memory, MP3 player, etc.)

Use to connect the external USB to Ethernet dongle provided for wired LAN (optional).

## **LINE OUT jack**

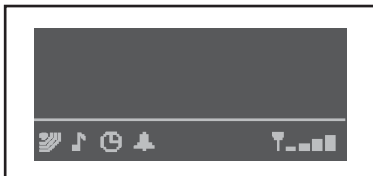
Use to connect this radio to external high-grade audio component using 'RCA Cable'.

# Part Description

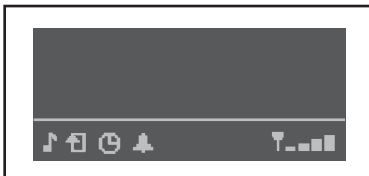
## • Display Window Icons

Icons are displayed on the bottom row of the display. The meaning of these icons is explained below.

Internet Radio Mode



Media Player Mode



Sleep timer.



Alarm set indicator.



The radio is in 'Internet Radio' mode and is playing a live stream.



The radio is in 'Media Player' mode. Media controls (PLAY/PAUSE etc.) are active.



The radio is in 'Internet Radio' mode and is playing on demand content.



Repeat mode enabled.



Shuffle mode enabled.



Wireless LAN signal strength indicator.



# Getting started

## • What you need before you can use your Internet radio

Before you can use your Internet radio, you need the following:

- A broadband Internet connection.
- A wireless access point (Wi-Fi) connected to your broadband Internet, preferably via a wireless router.
- If your wireless network is configured to use Wired Equivalent Privacy (WEP) or Wi-Fi Protected Access (WPA) data encryptions then you need to know the WEP or WPA code so you can get the Internet radio to communicate with the network.

*The Internet radio should work anywhere within 100 meters of the wireless access point. But this condition may differ depending on the access point or wireless network environments.*

*Before you continue, make sure that your wireless access point is powered up and connected to your broadband Internet. To get this part of the system working, you must read the instructions supplied with the wireless access point.*

## • Steps for connecting your radio to your wireless network

### Step 1 Power up the radio

Plug the cable from the mains adapter into the socket labeled 7.5V DC on the back of the radio.

**CAUTION: Use only the mains adapter supplied with the radio. Connecting a power supply with a different rating will cause permanent damage to the radio and may be hazardous.**

Note: if you would like to give your radio a static IP address then please see the 'Network config' section under the 'Configure' section at the end of the guide.

The display on the front of the radio will light up and say:

**Reciva Radio  
ARM Powered**

After a few seconds, this will change to show:

**Scan For networks**

### Step 2 Scan for a wireless network connection

When the display says <Scan for networks>, press the **SELECT** button.

Note: if you make a mistake at any point, press the **BACK** button to go back to the previous screen. The radio will now scan for all available wireless networks and will display:

**Scanning**

If the radio can't find any wireless networks, the display will show:

**No Networks  
Found**

If this happens then you will have to get your wireless access point working - see the instructions supplied with it. When the radio finds your wireless network, it displays the ESSID for the access point on the screen - this is a name that is allocated to the access point by the person who set up the network - for example:

**My Home Networks**

It is possible, and in some locations highly likely, that your radio will find more than one wireless access point, in which case you can choose which one you want to connect to. Turn the knob on the radio to see the ESSID for each access point the radio has found.

# Getting started

## Step 3 Connect to the wireless network

When the ESSID for the access point you want to connect to is displayed on the screen, press the **SELECT** button. If your network is not configured to need an encryption code, the screen should say:

**Connecting to  
network**

Then:

**Network OK**

If the screen displays either:

**Enter WEP Key**

Or

**Enter WPA Key**

Then the network is using one of the encryption systems: Wired Equivalent Privacy (WEP) or Wi-Fi Protected Access (WPA). You therefore need to enter the correct WEP or WPA code into the radio to get it to communicate with your network.

Only the person who set up the network in the first place knows this code; if that person is not you then you need to find out what it is.

After 3 seconds, the display goes into the code entry mode. To enter the code, use the knob to select each character of the code in turn, pressing the **SELECT** button after each character.

Note that WEP and WPA codes are sensitive to upper and lower case characters so you must enter them exactly.

Make sure the character you want is shown in the center of the display before you press **SELECT**.

After the final character, use the knob to select the [END] character and press the **SELECT** button.

The radio should now be able to connect to the network.

**Note. Before using the Internet Radio, You need to setup the language in advance.**

**You can select the language in the following menu. (Configure > Language)**

## • Using the Wired LAN function (optional)

This product supports the Wired LAN function using the external "USB to Ethernet dongle" optionally. The user should use the external "USB to Ethernet dongle" that provided with your the Internet Radio.

The user has to plug "USB to Ethernet dongle" in USB HOST jack before powering the unit.

If you use the the external "USB to Ethernet dongle", You can select the network in the following menu. (Configure > Network Config> Wired/Wireless) depending on your network conditions.

There are three selections in the network options as 'Auto', 'Wired Only', 'Wireless Only'.

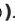
# Using the Internet Radio

## Putting the radio into standby mode

If you are not using the radio for an long period, you can conserve the radio power by putting it into standby mode. When in standby mode the clock will be shown on the display.

1. When the radio is on, press **POWER**() and the clock will be displayed.

Or

When the radio is off, press **POWER**() . The radio will take 30 seconds to start playing again, as it finds the radio station you were last connected to. But if AC adaptor is unplugged at the DC input, the radio will take up to 60 seconds to start playing when plugged into DC jack again.

## • Choosing a radio station to listen to

1. Press the **SELECT** button to return to the top-level menu.

(Note: if you make a mistake at any point, press the **BACK** button to go back to the previous screen.)



2. If the screen does not say <Stations> as shown above, turn the knob until it does.

3. Press the **SELECT** button.

4. Turn the knob to choose from <Location> or <Genre>.

<Location> enables you to choose from the radio stations provided by any country which you choose from a list.

<Genre> enables you to choose radio stations according to their content, for example Classic, Rock, Sport, News, etc.

5. Press the **SELECT** button to choose the option you want.

<Location>

1. Turn the knob until the display shows the region you want, then press the **SELECT** button.

2. Turn the knob until the display shows the country you want, then press the **SELECT** button.

3. Turn the knob until the display shows the station you want, then press the **SELECT** button and wait until the radio connects to that station.

<Genre>

1. Turn the knob until the display shows the type of content you want, then press the **SELECT** button.

2. Turn the knob until the display shows the station you want.

3. Press the **SELECT** button and wait until the radio connects to that station.

**Note that some radio stations do not broadcast 24 hours per day, and some stations are not always on-line. If this station has on-demand content (that is, it gives the option of listening to programs which have already been broadcast), see "Stations which enable you to choose what you listen to".**

## Changing the volume

Whilst a radio station is playing and is displayed on the radio's screen, you can change the volume simply by turning the knob.

If a radio station is being played and the Internet Radio is in its menu-browsing state, then you can change the volume if you keep pressing the **BACK** button until the radio leaves its menu and displays the current station and then turn the knob.

## Returning to the menu while a station is playing

When the Internet radio is playing a radio station it will display the station's name and bit rate. You can return to the radio's menu section at any time by either pressing the **SELECT** button – which will take you to the 'Stations' menu - or the **BACK** button to return to the previous menu item.

## • Storing a radio station in a preset

Whilst a radio station is playing, hold down one of the preset buttons (numbered 1 to 10) until the screen says



Where # is the number of the button you held down.

## Playing a preset radio station

When a radio station is playing, briefly press one of the preset buttons, **1 to 10**, for the station you want.

(Note, do not hold the button down - if you do then the station currently playing will overwrite the one stored in the preset; be careful).

## Requesting a station that is currently unavailable

If you want to listen to a particular radio station which is currently not available online, you can visit the Reciva website at <http://www.reciva.com/> and put in a request to add the station to the list.

# Using the Internet Radio

## • Stations which enable you to choose what you listen to

Some radio stations can provide a number of options associated with their station; for example, some stations enable you to listen to programs that have already been broadcast. When you select a radio station that has this facility, the station does not start playing immediately, but instead the display shows:



1. Turn the knob to choose <Live> or <On Demand>, then press the **SELECT** button.  
If you choose <Live> then the radio plays the current output from this station as normal.  
If you choose <On Demand> then more screens are displayed where you choose what you want to listen to.  
What is displayed will depend on the station you have chosen - the following steps are only a guide.
2. When you choose <On Demand>, the display shows the names of the programs. Turn the knob to choose the program you want, then press the **SELECT** button.
3. When you have chosen the program you want to listen to, either it will just start playing, or the display may show a list of days for you to choose from - use the knob to set the day the program was broadcast, then press the **SELECT** button.
4. After you have chosen the day, you may be able to choose the Start Time. Set the Start Time using the knob and press the **SELECT** button.
5. Programs which enable you to choose the time also enable you to fast-forward and rewind to the part you want while the radio is playing. You can now turn the knob to change this time. You can also use the **7/ SKIP TO PREVIOUS TRACK** or **8/ SKIP TO NEXT TRACK** buttons to adjust the time. When you press the **SELECT** button again, the program will play from that point.
6. Once the Internet radio is playing a program that allows you to choose its start time, the radio's preset buttons become playback-control buttons for the stream; e.g. you can press PAUSE at any time to pause the stream, and then press PLAY to resume playing.

# Using Podcasts



## • Choosing Podcasts to listen to

1. Press the **SELECT** button to return to the top-level menu.

(Note: if you make a mistake at any point, press the **BACK** button to go back to the previous screen.)



2. If the screen does not say < Podcasts > as shown above, turn the knob until it does.

3. Press the **SELECT** button.

4. Display a few of podcasts portal site. (for example, BBC Podcasts, Podcast.com)

5. Press the **SELECT** button to choose the option you want.

6. Displays dozens of podcasts folder. (for example, Recommended, International, Books, Business...)

7. Press the **SELECT** button to choose the option you want.

8. Turn the knob until the display shows the podcast you want, then press the **SELECT** button and wait until the radio connects to the selected podcasts feed. After a few seconds, you can listen to podcasts

The remaining operation is similar to the internet radio operation.

# Using the Media Player

The Media Player allows you to play audio files (AAC, AIFF, AU, MP3, RM, WAV and WMA) and playlists (M3U) stored on a networked PC. It has been verified to work on Windows 2000, Windows XP and Windows Vista.

To be able to play music files that you have stored on your PC via the media player, please ensure that:

1. The music files are one of the allowed type of audio (AAC, AIFF, AU, MP3, RM, WAV and WMA).
2. Music files are not 'protected'.
3. Music files are stored in the correct location on your PC and 'File Sharing' is switched on.
4. Music files can be shared on the network.

**Note. This product don't support the music files that built in DRM properties (Digital Rights Management).**

## • Windows shares

**Set up your Windows PC to allow the radio to access your audio files via Windows Shares**

1. Please ensure that your PC is available on the network for your Internet radio, then, using Windows Explorer, locate the folder where your audio files are stored.
2. Right click on the folder.
3. Select 'Properties'.
4. Click on 'Sharing'.
5. Select 'Share this folder on the network' and 'Allow network users to change my files'.

Please note, do not try to make your 'My Documents' or any of its sub-folders (e.g. 'My Music') shareable.

## Locate the shared audio files using the radio

1. Power up the radio.
2. Wait for 'Stations' to be displayed on the radio, or press the **BACK** button repeatedly until 'Stations' is displayed.
3. Turn the knob until the radio display shows 'Media Player' and press **SELECT**.
4. Turn the knob until 'Windows Shares' is displayed and press **SELECT**.
5. Turn the knob until 'Scan for PCs' is displayed and press **SELECT** again.
6. The radio will now display 'Finding PCs'. Once the radio has finished, turn the knob to highlight the correct PC and press the **SELECT**. The radio will search for shared folders.
7. Turn the knob to highlight the correct shared folder and press **SELECT**.
8. The radio will display 'File Scan...' as it scans through the media files in the shared folder.  
If you have a large number of audio files this could take several minutes to complete.

9. Once the radio has finished scanning, it will display 'By Album'. You can now browse through the scanned media files, which will now be organized 'By Album', 'By Artist' and 'Playlists' – if available.

Note that the first time the file scan is done a file called '.reciva\_media\_cache' is written to the folder where the audio files are stored. This is in order to speed up subsequent file scans.

## Listening to a single shared track

1. Turn the knob until 'By Artist' is displayed and press the **SELECT** button.
2. Turn the knob until the required artist is displayed and press the **SELECT** button.
3. Turn the knob until the required album name is displayed and press the **SELECT** button.
4. '[Add to Queue]' will be displayed. Turn the knob until the required track is displayed and press the **SELECT** button. The track will begin playing.

## Listening to a complete shared album

1. Turn the knob until 'By Artist' is displayed and press the **SELECT** button.
2. Turn the knob until the required artist is displayed and press the **SELECT** button.
3. Turn the knob until the required album name is displayed and press the **SELECT** button.
4. '[Add to Queue]' will be displayed, press the **SELECT** button. The album will begin playing

## Queuing up tracks for playback later

1. Highlight the required track.
2. Press the **SELECT** button. 'Track Added To Queue' will be displayed.

## Queuing up albums for playback later

1. Highlight the required album and press the **SELECT** button.
2. Turn the knob until '[Add To Queue]' is displayed and press the **SELECT** button. 'Tracks Added to Queue' will be displayed.

# Using the Media Player

## Controlling playback

1. Use the **5/STOP** button to stop playback.
2. Use the **6/PLAY/PAUSE** button to either pause a currently playing track or to restart a currently paused track or to restart a stopped track.
3. Use the **7/SKIP TO PREVIOUS TRACK** button to start playback of the previous track in the queue.
4. Use the **8/SKIP TO NEXT TRACK** button to start playback of the next track in the queue.

## Browsing the list of tracks currently queued up for playback

1. Press the **4/BROWSE** button. The currently playing track name will be displayed.
2. Turn the knob to see which tracks are queued up for playback.
3. If you want to jump to a particular place in the queue then press the **SELECT** button when the required track is displayed.

## Removing tracks from the queue

1. Press the **4/BROWSE** button. The currently playing track name will be displayed.
2. Turn the knob to select the track you want to remove from the queue.
3. Press and hold the **5/STOP** button for 2 seconds and the radio will display: 'Delete Track?'
4. Turn the knob to highlight 'Yes' or 'No'.
5. Press **SELECT** to confirm whether you actually want to delete the track from the queue.
6. If 'Yes' was selected then 'Removed From Queue' will be displayed.
7. To remove all tracks from the queue, keep pressing **BACK** until the 'Media Player' menu item is selected, press **SELECT** and then turn the knob to select 'Clear Queue' and press **SELECT** again.

## Playing tracks in random order(shuffle)

1. Select the individual tracks as described previously.
2. Navigate to top-level menu item 'Media Player' using the **SELECT** and **BACK** buttons and press the **SELECT** button.
3. Turn the knob until 'Playback Mode' is displayed and press the **SELECT** button.
4. Turn the knob until 'Shuffle' is displayed and press the **SELECT** button.
5. Turn the knob to select YES/NO to confirm that shuffle mode should be enabled.

## Playing tracks in the queue repeatedly(repeat)

1. Select the individual tracks as described previously.
2. Navigate to top-level menu item 'Media Player' using the **SELECT** and **BACK** buttons and press the **SELECT** button.
3. Turn the knob until 'Playback Mode' is displayed and press the **SELECT** button.
4. Turn the knob until 'Repeat' is displayed and press the **SELECT** button.
5. Turn the knob to select YES/NO to confirm that repeat mode should be enabled.

## • UPnP servers

### Set up a Windows PC to allow the radio to access your audio files via a UPnP server

If your music is stored as large, uncompressed files, for example .WAV, we recommend you follow this method of file sharing.

If your music is stored as smaller, compressed files, for example .MP3 or .WMA we recommend you follow the 'Windows Shares' method of file sharing outlined in the section 'Set up your Windows PC to allow the radio to access your audio files via Windows Shares'.

1. If your PC is running Microsoft Windows XP or Windows Vista, then you can use Windows Media Player 11 (WMP11) to act as your UPnP (Universal Plug and Play) media server 1.0. Windows Media Player 11 may be downloaded from Microsoft's website and installed by following the instructions detailed in its installation wizard.
2. Once installed, Windows Media Player 11 will create a library from all the media files available to it on your PC. To add new media files to the library, select 'File → Add to Library... → Advanced Options', click 'Add' and choose the files you wish to add and click 'OK'.
3. You will now need to connect your Internet radio to Windows Media Player 11 and configure it to allow the radio to access your media library. In order to this, you will need to do the following:
  - a. Keep pressing **BACK** to get to the radio's top-level menu and then turn the rotary knob to select 'Media Player'.
  - b. Press **SELECT** and then turn the knob to highlight 'UPnP Servers'.

# Using the Media Player

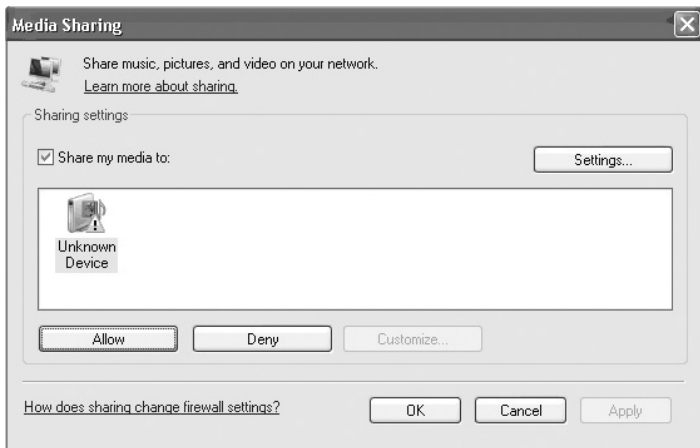
- c. Press **SELECT** and the radio will scan for all available UPnP servers. Note, this may take a few seconds for the radio to complete its scan and before the scan has completed, the radio will display '[Empty]'. The radio will continue to display '[Empty]' if no UPnP servers are found.
  - d. After a successful scan, select your UPnP server, by rotating the knob if there is more than one UPnP server, and then press **SELECT** (note, your radio will display 'Access Denied' at this stage).
4. Your PC will now prompt you that a device has attempted to connect to your UPnP server. In order to allow the radio to have access to the media files, you will need to click the 'Library' tab from Windows Media Player 11 and select the 'Media Sharing...' item to open the 'Media Sharing' window.

## Selecting 'Media Sharing...' for Windows Media Player 11:



5. From the 'Media Sharing' window, the radio will be listed as an unknown device.
- Click on the unknown device listed, then click the 'Allow' button and then click 'OK'.

## Allowing the Radio to Connect:





# Using the Media Player

## Locating and playing media files using the radio and UPnP

1. Once the UPnP server is configured to share media files with the Internet radio, you can play the files by doing the following on the radio.
2. Keep pressing **BACK** to get to the radio's top-level menu and then turn the knob to select 'Media Player'.
3. Press **SELECT** and then turn the knob to highlight 'UPNP Servers'.
4. Press **SELECT** and the radio will scan for all available UPnP servers. Note, this may take a few seconds for the radio to complete its scan and before the scan has completed, the radio will display '[Empty]'. The radio will continue to display '[Empty]' if no UPnP servers are found.
5. After a successful scan, select your UPnP server, by rotating the knob if there is more than one UPnP server, and then press **SELECT**.
6. The radio will now list the media categories available from the UPnP server, e.g. 'Music', 'Playlists' etc. Turn the knob to select which category you wish to browse, press **SELECT** and turn the knob to highlight a sub category and press **SELECT** again. For example, you could select 'Music' and then 'Album'.
7. Turn the knob to highlight the media files that you wish to play and press **SELECT**.
8. The radio will display '[Add to Queue]', press **SELECT** and the radio will add the tracks to its queue and begin playing them automatically.

## Browsing the list of tracks currently queued up for playback

1. Press the **4/BROWSE** button. The currently playing track name will be displayed.
2. Turn the knob to see which tracks are queued up for playback.
3. If you want to jump to a particular place in the queue then press the **SELECT** button when the required track is displayed.
4. It is important to note here that media files scanned from the radio's 'Windows Shares' function can also be added to the radio's queue.

## Queuing up UPnP tracks for playback later

1. Highlight the required track.
2. Press the **SELECT** button. 'Track Added To Queue' will be displayed.

## Queuing up albums for playback later

1. Highlight the required album and press the **SELECT** button.
2. Turn the knob until '[Add To Queue]' is displayed and press **SELECT** button. 'Tracks Added to Queue' will be displayed.

## Controlling playback

1. Use the **5/STOP** button to stop playback.
2. Use the **6/PLAY/PAUSE** button to either pause a currently playing track or to restart a currently paused track or to restart a stopped track.
3. Use the **7/SKIP TO PREVIOUS TRACK** button to start playback of the previous track in the queue.
4. Use the **8/SKIP TO NEXT TRACK** button to start playback of the next track in the queue.

## Removing tracks from the queue

1. Press the **4/BROWSE** button. The currently playing track name will be displayed.
2. Turn the knob to select the track you want to remove from the queue.
3. Press and hold the **5/STOP** button for 2 seconds.
4. Turn the knob to highlight 'Yes' or 'No'.
5. Press **SELECT** to confirm whether you actually want to delete the track from the queue.
6. If 'Yes' was selected then 'Removed From Queue' will be displayed.
7. To remove all tracks from the queue, keep pressing **BACK** until the 'Media Player' menu item is selected, press **SELECT** and then turn the knob to select 'Clear Queue' and press **SELECT** again.

# Using the Media Player

## Playing tracks in random order(shuffle)

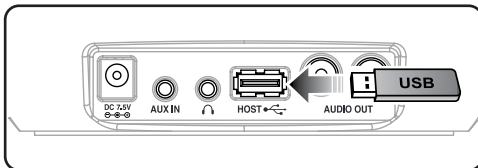
1. Select the individual tracks as described previously.
2. Navigate to top-level menu item 'Media Player' using the **SELECT** and **BACK** buttons and press the **SELECT** button.
3. Turn the knob until 'Playback Mode' is displayed and press the **SELECT** button.
4. Turn the knob until 'Shuffle' is displayed. And press the **SELECT** button.
5. Turn the knob to select YES/NO to confirm that shuffle mode should be enabled.

## Playing tracks in the queue repeatedly(repeat)

1. Select the individual tracks as described previously.
2. Navigate to top-level menu item 'Media Player' using the **SELECT** and **BACK** buttons and press the **SELECT** button.
3. Turn the knob until 'Playback Mode' is displayed and press the **SELECT** button.
4. Turn the knob until 'Repeat' is displayed and press the **SELECT** button.
5. Turn the knob to select YES/NO to confirm that repeat mode should be enabled.

## • Local Media (External USB Host)

### Playing media files from the USB thumb drive



You can play music files that are stored on USB compatible devices (USB thumb drive, MP3 player, etc.).

1. Connect the USB thumb drive to the USB HOST socket on the back side of this radio.
2. Navigate to the top level menu item 'Media Player' using the **SELECT** and **BACK** button.
3. Turn the knob until 'Local Media' is displayed and press the **SELECT** button.
4. The radio will display 'File Scan...' as it scans through the media files in the USB thumb drive.

If you have a large number of audio files, this could take several minutes to complete.

5. Once the radio has finished scanning the thumb drive for media files, you will then be able to browse the files by selecting 'By Album' and 'By Artist' .
6. Finally, press the **SELECT** button for the files you wish to add to the radio's media queue.

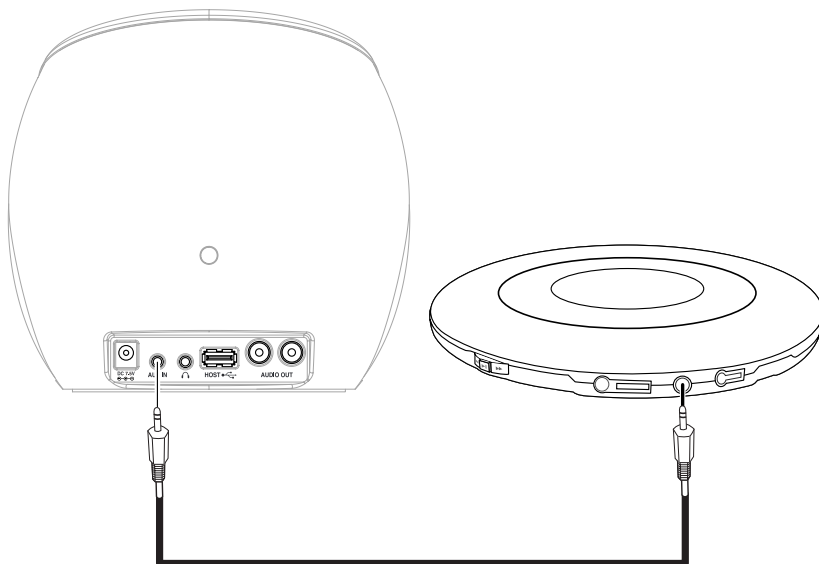
### Note.

- It is not recommended using an external-type HDD.
- This product don't support the music files that built in DRM properties (Digital Rights Management).

# Auxiliary Function

You can listen to music from the audio device via the speakers of this device.

English



1. Connect an audio device, such as a MP3 player or CD player, to the AUX IN jack on the back side of this radio by using "Audio Cable".
2. Navigate to the top level menu item 'Auxiliary Input' using the **SELECT** and **BACK** buttons.
3. Press the **SELECT** button. Then this device switches to the Auxiliary Input.
4. Turn the knob to adjust the volume.

# Alarm clock



English

Use this option to set the alarms , to view the current alarm setting or to set the sleep timer.

## • Setting the alarms

- 1. Press the **SELECT** button. (Note: if you make a mistake at any point, press the **BACK** button to go back to the previous screen.)
- 2. Turn the knob until the display says <Alarm Clock>.



- 3. Press the **SELECT** button.
- 4. Turn the knob until the display says <Set Alarms>.



- 5. Press the **SELECT** button.



- 6. Turn the knob to swap between the various alarms and 'Disable All'. Pressing the **SELECT** button on 'Disable All' will cause all the alarms to be turned off. The display will then say 'All alarms disabled' for 3 seconds, then returns to the radio station display.



- 7. If you select one of the numbered alarms, then the radio will allow you to select the time for the alarm.



- 8. Turn the knob until the hour setting is correct, then press the **SELECT** button.



- 9. Turn the knob until the minute setting is correct, then press the **SELECT** button.



- 10. Turn the knob to choose between 'Once', 'Every day', 'Weekly', 'Weekdays' and 'Weekends'. If you choose 'Once' or 'Weekly', then you will need to choose which day you would the alarm to be activated on and then press the **SELECT** button.
- 11. Finally, you will need to select which type of alarm you would like to use: the radio's buzzer, the radio station currently being listened to or a station that is assigned to a preset and then press the **SELECT** button.

## • Setting the sleep timer

Selecting this option will enable the Internet radio to switch itself off after a set period.

- 1. After selecting the 'Sleep Timer' menu item, the radio will display: 'Sleep Timeout' and the sleep timer value in the form '00:00:' (hours: minutes).
- 2. Rotate the knob to change to sleep timer value and then press **SELECT** to begin the sleep timer.
- 3. The radio will continue to play as normal, but it will go into standby mode after the sleep timer has expired.
- 4. To turn the radio back on again, simply press the **POWER** (⏻) button.

# Configure menu

## Choosing the option you want from the Configure menu

1. Press the **SELECT** button.  
(Note: if you make a mistake at any point, press the **BACK** button to go back to the previous screen.)
2. Turn the knob until 'Configure' is displayed press the **SELECT** button.
3. Turn the knob until the display shows the option you want.
4. Press the **SELECT** button to choose the option shown on the display. The options are explained below.

## Network Config

This is useful if you take your Internet radio to another building where you want to use it.

### Configuring the radio to use a static IP address

In order for your radio to use a static IP address on your network, you will need to do the following:

1. From your radio, select the 'Configure - Network config - Edit Config' menu and then press **SELECT**.
2. The radio will now display 'Auto (DHCP)? YES / NO'. Turn the radio's rotary encoder to select 'NO' and then press **SELECT**.
3. You will now be able to enter the IP address you wish to give your radio by using the rotary encoder to select the desired numbers followed by pressing **SELECT** to end inputting the address.
4. The radio will now prompt you to enter the required network mask for the network. You will be able to enter this in the same way as before for entering the IP address.
5. You will now need to enter the default gateway's IP address used by the radio on the network.
6. Finally, you will need to enter the DNS IP address for the radio. On some networks, you may need to enter your ISP's DNS IP address, which should be available on your ISP's support page on their website.
7. After entering the above information, the radio will now connect successfully to your network. In order to make the radio use DHCP again (to automatically get its network information when it attempts to connect to a network), you will need to select 'Configure - Network config > Edit Config' and then set 'Auto (DHCP)? YES / NO' to 'YES'.

If your radio supports wired networking using "USB to Ethernet dongle" then you will be able to configure your radio to connect to your network via an available Ethernet connection (RJ45) or via a Wi-Fi router:

### Configuring the radio to only use a wired Ethernet connection

From the radio's 'Network config' menu, select 'Wired/Wireless'. This menu will present you with three options: 'Wireless Only', 'Wired' and 'Auto'. Selecting 'Wired Only' will allow cause the radio to reboot and then only use its Ethernet connection to communicate with the network. The radio will also disable its wireless network capabilities.

### Configuring the radio to only use a Wi-Fi connection

Selecting the 'Wireless Only' option from the 'Wired/Wireless' menu will allow cause the radio to reboot and then only use its Wi-Fi connection to communicate with the network. The radio will also disable its Ethernet connection.

### Configuring the radio to use either an Ethernet or a wireless connection

Selecting the 'Auto' option from the 'Wired/Wireless' menu will allow cause the radio to reboot and then attempt to establish an Ethernet connection, if it is available, to communicate with the network. Otherwise, the radio will attempt to establish a Wi-Fi connection to the network.

Once the radio has established a certain type of connection to the network, then this type of connection will remain in use while the radio is on.

The 'Network Config' menu also allows you to choose whether or not the Internet radio displays a warning message when its network signal strength is low. You can enable this feature by selecting 'Signal Warning' and then selecting 'Yes'.

# Configure menu

## Version

Displays the versions numbers of the various parts of software and hardware on your Internet radio.

## Upgrade Firmware

Use this option to download new firmware for the radio from the Reciva portal on the Internet. If there is new firmware available, then the radio will prompt you if you want to download it or not. Note, at this stage, you can press the radio's **BACK** button to cancel the radio beginning a firmware upgrade.

**A Firmware upgrade may take several minutes, so do not switch off the power to the radio until the operation is complete otherwise the radio may become permanently damaged.**

## Language

Allows you to change the display language.

## Factory Reset

Puts all the settings back to their defaults as they were when they left the factory. If you perform a factory reset on your radio you will lose all your presets and your wireless network connection.

## Register

This will display a key that can be used to register the radio on the Reciva Customer portal:

**<http://www.reciva.com/>**

## Clock Setup

Use this option to set the time & the date.

### Setting the clock

1. Press the **SELECT** button. (Note: if you make a mistake at any point, press the **BACK** button to go back to the previous screen.)
2. Turn the knob until the display says <Configure>.



3. Press the **SELECT** button.

4. Turn the knob until the display says <Clock Setup>.



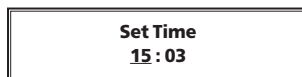
5. Press the **SELECT** button. The display says <Set Time/Date>.



6. Press the **SELECT** button.



7. Turn the knob until the hour setting is correct, then press the **SELECT** button.



8. Turn the knob until the minute setting is correct, then press the **SELECT** button.



9. Set the Date as below



The display says 'Time and Date Set' message for 3 seconds, then returns to 'Set Time/Date' menu.

# Configure menu



## Backlight

Selecting this option will alter the Internet radio's backlight values.

1. After selecting the 'Backlight' menu item, the radio will display its list of three menu modes: 'Active', 'Inactive' and 'Standby'. These three states are explained below:

The radio gets into its 'inactive' state when there is no user activity for 30 seconds.

The 'active' state is when there is user activity.

'Standby' is the state when the radio has been turned off.

2. Rotate the knob to highlight the desired menu mode and press **SELECT**.
3. The radio will now display the current backlight value for this menu mode. You can alter this value by rotating the knob to increase or decrease it.

## WiFi Strength

Selecting this option will display the wireless signal strength.

1. The radio will now display the current wireless signal strength value for this menu mode.

# Configuring 'My Stuff'

## • Registering an account on Reciva's website

1. Open the website, <http://www.reciva.com> from your Internet browser.
2. Click on the 'Register' link and follow the on-screen instructions to register an account. Please note, during the registration process, a validation code will be sent to you via email. Please enter this code when prompted to do so.
3. After logging into your account, you will be able to edit your information for 'My Profile', 'My Stations', 'My Streams', 'My Radios' and 'My Podcasts' from the left-hand side of the website.
4. You can now add your Internet Radio to your account on the website by accessing the 'My Radios' link. From the 'My Radios' section, you will need to enter in your radio's eight digit serial number, which can be found from the 'Configure - Version' menu on the radio, and you will also need to enter in your radio's seven digit registration code, which can be found from the 'Configure - Register' menu on the radio.

## Configuring 'My Profile'

Once logged into you Reciva account, you can edit your account's details from your 'My Profile' section. Click on the 'My Profile' link to view your account's current information. This information will include various details such as your address, user name, password etc. Edit your details and then click on the 'Update' button to save them.

## • Configuring 'My Stations'

1. It is possible to search for radio stations that are available in Reciva's stations' database from Reciva's website. Whenever stations are searched for on the website, they will be displayed in a list of search results together with a link to 'Add to My Stations'.
2. Clicking on the 'Add to My Stations' link, will add the station to your account's 'My Stations' list. Clicking on 'My Stations' and then selecting the station will allow you to edit this list.
3. Once you have Internet stations available in your 'My Stations' list, you may play these stations from your Internet Radio. These stations will be available on your radio from the menu item: 'Stations - My Stuff - My Stations'. Please note, the stations will only be available to your radio once your radio has downloaded a new stations' list. To cause the radio to download a new stations' list immediately, please remove and reconnect the power to your radio.

## • Configuring 'My Streams'

1. Once logged into your Reciva website account, you can add your own Internet radio streams to your 'My Streams'.
2. Clicking on 'My Streams' will prompt you to enter the station's name and its media stream URL. The media stream URL should be a link to a website's actual audio stream. If you have any doubt about locating the media stream URL from a webpage, then please refer to the FAQs section on Reciva's website, <http://www.reciva.com>.
3. Once you have Internet radio streams available in your 'My Streams' list, you may play these stations from your Internet Radio. These stations will be available on your radio from the menu item: 'Stations - My Stuff - My Streams'. Please note, the streams will only be available to your radio once your radio has downloaded a new stations' list. To cause the radio to download a new stations' list immediately, please remove and reconnect the power to your radio.

## • Configuring 'My Podcasts'

1. It is possible to add audio podcasts (RSS feeds) to your Reciva account that can be accessed on your Internet radio. To add a podcast, simply login to your account and then click on the 'My Podcasts' link.
2. From your 'My Podcasts' section, you can add your chosen podcast by entering in the podcast's name and its URL as prompted by the website. Please note, the podcast URL will have to be a direct RSS feed which will end with the '.xml' extension e.g. <http://someurl.com/podcast.xml>
3. Once you have podcasts available in your 'My Podcasts' list, you may access these feeds from your Internet Radio. These podcasts will be available on your radio from the menu item: 'Stations > My Stuff > My Podcasts'. Please note, the podcasts will only be available to your radio once your radio has downloaded a new stations' list. To cause the radio to download a new stations' list immediately, please remove and reconnect the power to your radio.



# Product Specifications

Product specifications can be changed without prior notice for improving the product performance.

Display		Graphic 132 x64 ESTN LCD Monochrome (Negative)
Network	WiFi	IEEE 802.11b,g
	Wired (option)	10/100Mbps IEEE 802.3x
Network Functionality	WEP Key	HEX and ASCII, 64/128 bit, Auto sense
	WPA	WPA1(TKIP) with PSK only
	IP v4 protocol	Static or DHCP address assignment
Audio Decoders		Real Audio, WMA, AAC, MP3, AIFF, AU, WAV
Playlist formats		ASX,RAM,M3U,RPM,PLS
Clock Alarm		Time, Alarm
Rated Power	Speaker	3W + 3W Stereo, 8 ohm
	Headphone	20mW + 20mW Stereo, 16 ohm
Terminals	Headphone	X1, 3.5mm Stereo mini-jack
	AUX IN	X1, 3.5mm Stereo mini-jack
	LINE-OUT	X1, RCA pin jacks(Stereo)
	USB Host	x1, USB A jack
	DC Input	X1, DC 7.5V 1.6A
Key	Tact	PSET1~PSET10, REPLY,SELECT,BACK, ⏻
	Rotary Encoder	Volume Up/Down, Menu Navigation
Power	AC Adaptor	DC 7.5V, 1.6A
	Power Consumption	Max 15W, Normal 8W
Dimension(mm)	Set (W x H x D)	173 x 170 x 163
Weight(Kg)		1.2 Kg
Recommended System (OS)		Windows2000/ Windows XP SP2/Windows Vista

# Troubleshooting

If you experience any trouble with your wireless Internet radio, first refer to the troubleshooting below. And then you may find it useful to visit the help section of the following: <http://www.reciva.com> if your questions remain unanswered.

If you have trouble connecting the radio to your wireless network, these steps may help to resolve the problem:

1. Confirm that your connected PC can access the Internet (i.e. can browse the web) using the same network.
2. Check that a DHCP server is available, or that you have configured a static IP address on the radio. You can configure a static IP address on the radio using the menu item 'Configure → Network Config → Edit Config', and then select 'No' for 'Auto (DHCP)'.
3. Check that your network's firewall is not blocking any outgoing ports. As a minimum, the radio needs access to UDP and TCP ports 80, 554, 1755, 5000, 6000 and 7070.
4. Check your access point does not restrict connections to particular MAC addresses. You can view the radio's MAC address using the menu item 'Configure → Network Config → View Config → MAC address'.
5. If you have an encrypted network, check that you have entered the correct key or pass phrase into the radio. Remember that text-format keys are case sensitive. If, when attempting to connect to an encrypted network, your radio displays: 'Wireless error' followed by a 5-digit number, then please ensure that you enter the correct passphrase for the network. If the problem persists, then you may need to consult your network configuration.

If your radio can connect to the network successfully, but is unable to play particular stations, it may be due to one of the following causes:

1. The station is not broadcasting at this time of the day (remember it may be located in a different time zone).
2. The station has reached the maximum allowed number of simultaneous listeners.
3. The station is not broadcasting anymore.
4. The link on the radio is out of date.
5. The Internet connection between the server (often located in a different country) and you is slow.

Try using a PC to play back the stream via the broadcaster's web site.

If you can play back the station with a PC, use the form at <http://www.reciva.com/> to notify us so that we can change the station data that is used by the radio.

If you are having trouble connecting to your Windows XP shared music folder, and you are using a username with no password, try adding a new user name with a password to Windows (Control Panel – User Accounts) specifically for the radio, and try to connect using that.



# Software licence information

- This product contains software licensed under version2 of the GNU Public License and version 2.1 of the GNU Lesser Public License, The source code for this software is available from: <http://www.reciva.com/gpl>
- This product includes technology owned by Microsoft Corporation and under a licence from Microsoft Licensing GP. Use or distribution of such technology outside of this product is prohibited without a license from Microsoft Corporation and/or Microsoft Licensing, GP as applicable.